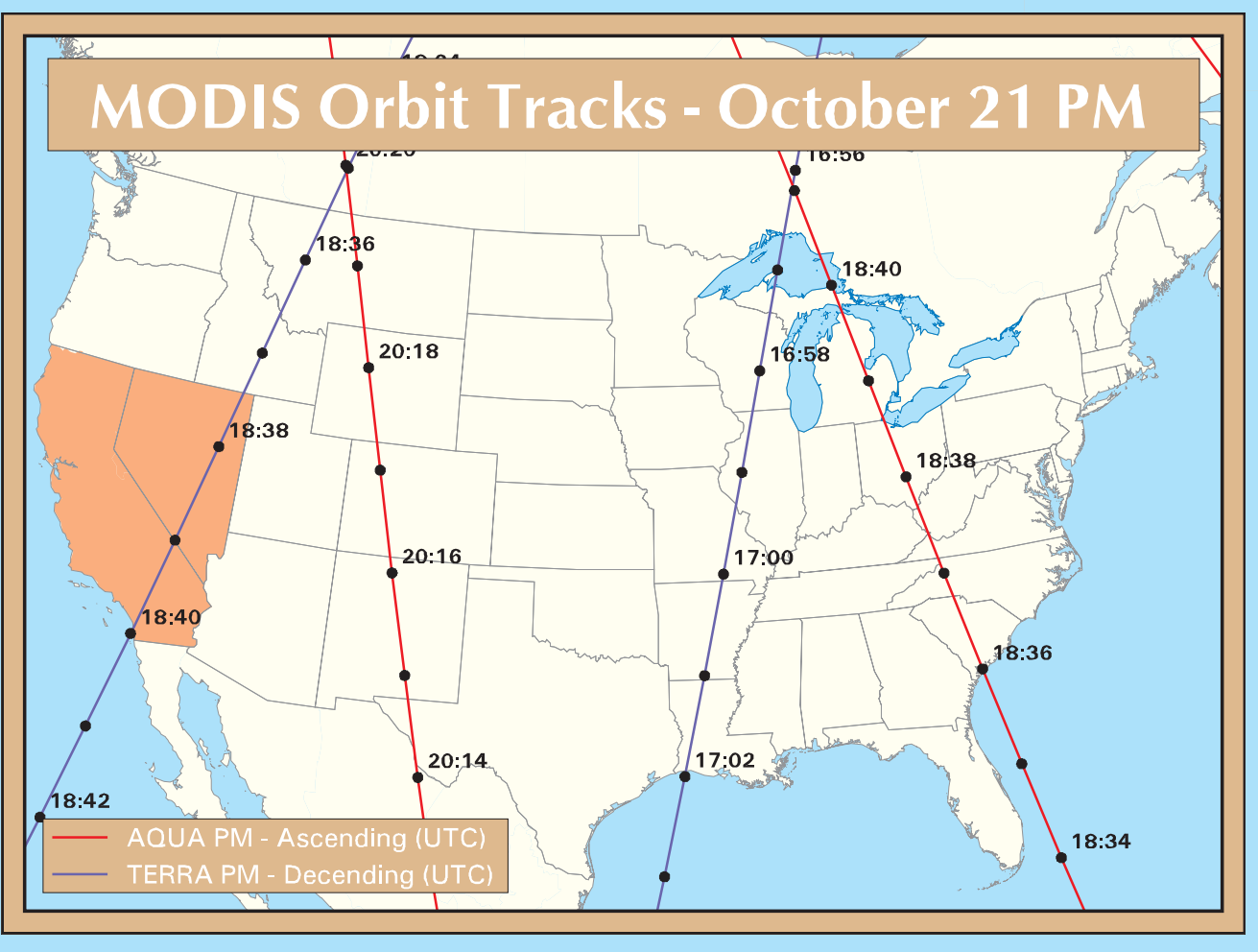
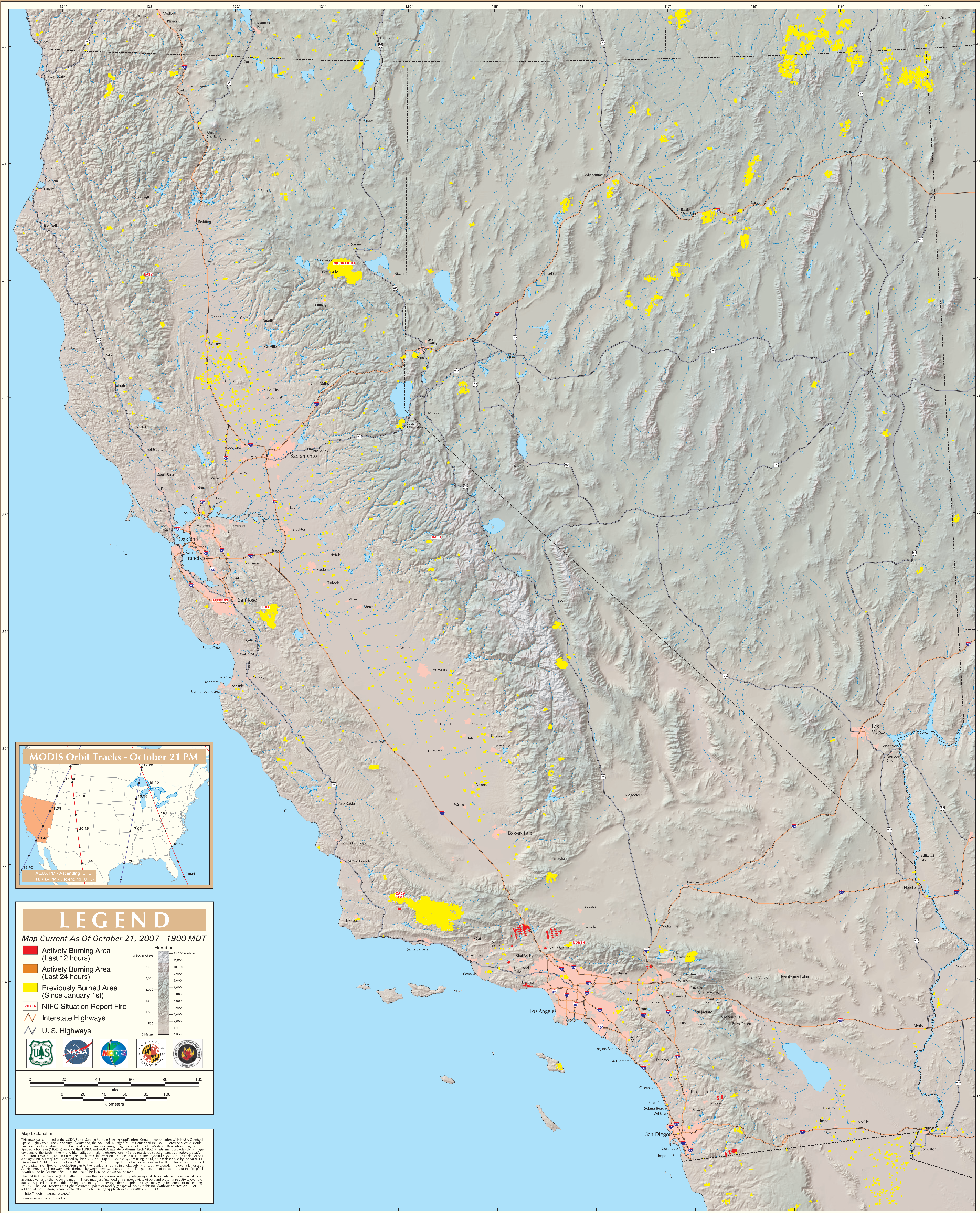


# MODIS Active Fire Detections - October 21, 2007

## California North/South & Great Basin West Geographic Area



### LEGEND

Map Current As Of October 21, 2007 - 1900 MDT

- Actively Burning Area (Last 12 hours)
- Actively Burning Area (Last 24 hours)
- Previously Burned Area (Since January 1st)
- NIFC Situation Report Fire
- Interstate Highways
- U. S. Highways

Scale: 0 to 100 miles / 0 to 100 kilometers

Elevation Scale: 0 to 12,000+ feet / 0 to 3,600+ meters

**Map Explanation:**  
 This map was compiled at the USDA Forest Service Remote Sensing Application Center in cooperation with NASA's Goddard Space Flight Center, the University of Maryland, the National Interagency Fire Center and the USDA Forest Service's Mountain Fire Science Laboratory. The fire locations are mapped using imagery collected by the Moderate Resolution Imaging Spectroradiometer (MODIS) onboard the TERRA and AQUA satellite platforms. Each MODIS instrument provides daily image coverage of the Earth to the mid to high latitudes, making observations in the conterminous United States at spatial resolutions of 250, 500, and 1000 meters. Thermal information is collected at 1000-meter spatial resolution. Fire detections displayed on this map are processed by the MODIS Rapid Response system using the algorithm described in the MODIS User Guide. Identification of a MODIS pixel as "fire" in this map does not necessarily mean that the entire area represented by the pixel is on fire. A fire detection can be the result of a hot fire in a relatively small area, or a cooler fire over a larger area. Within a pixel, there is no way to discriminate between these two possibilities. The geolocation of the centroid of the fire pixel is within one-half of one pixel (500meters) of the location shown on the map.  
 The USDA Forest Service (USFS) attempts to use the most current and complete geospatial data available. Geospatial data accuracy varies by theme on the map. These maps are generated as a synoptic view of data and present the activity over the date. The USFS reserves the right to correct, update or modify geospatial input to this map without notification. For additional information, please contact the Remote Sensing Application Center (801-619-7520).  
 (\*) <http://modis-fire.sfc.nasa.gov/>  
 Transverse Mercator Projection.